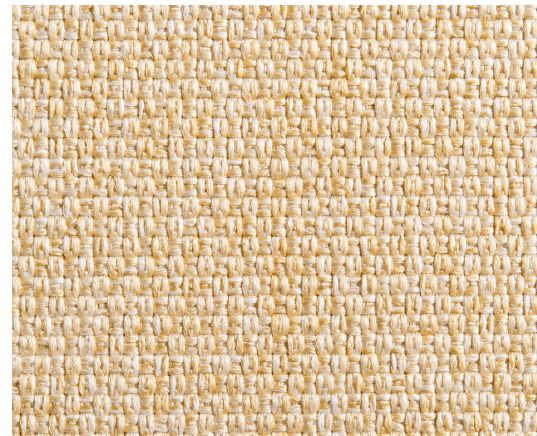


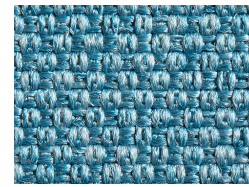


panel fabric | grade one

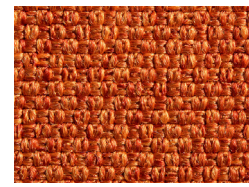
ballo



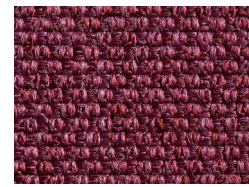
sand F5181



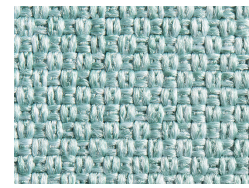
oceanic F6131



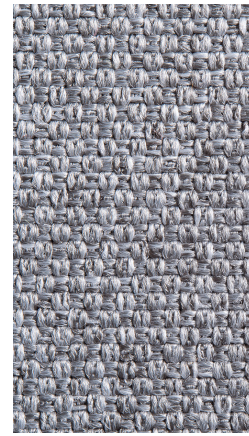
aurora F6121



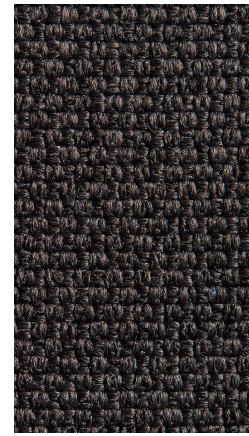
dusk F6171



seaside F5191



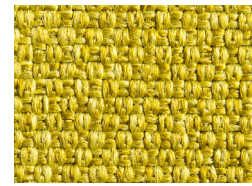
stone F6151



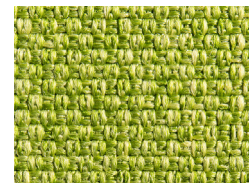
nightfall F6161



pebble F5171

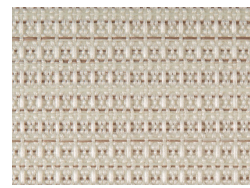


sunset F6141

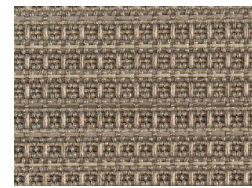


moss F6111

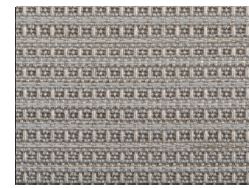
zapote



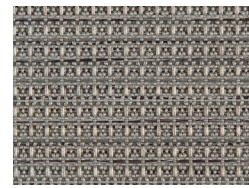
garter F4141



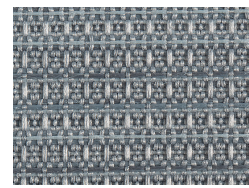
lace F4181



stockinette F4151

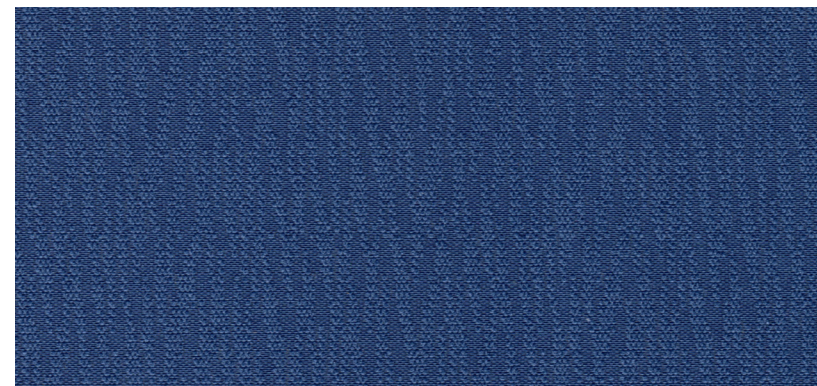


intarsia F4171

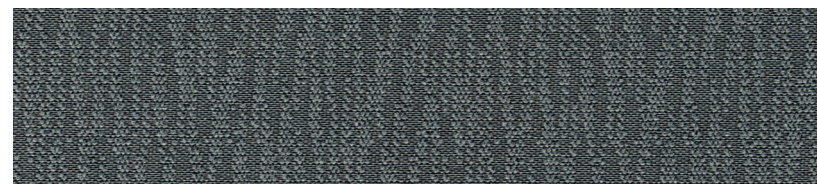


cable F4161

crevasse



crown blue F3191



neutral grey F3201



chamonix F3181

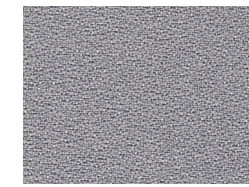
commerce



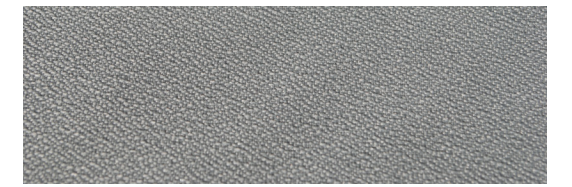
slate F2141



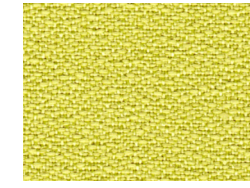
sand F2151



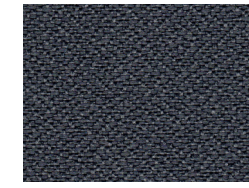
grey F2161



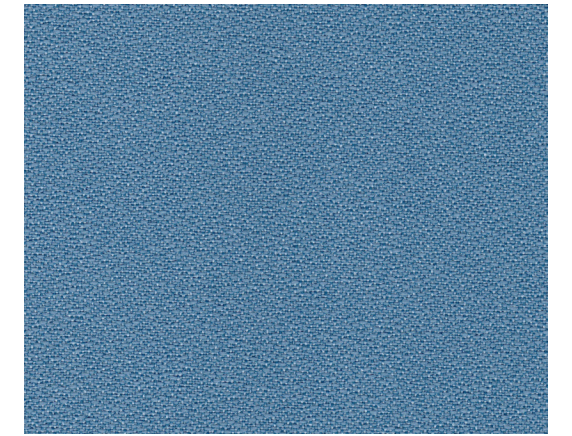
steam F2201



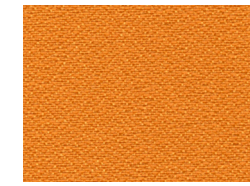
kiwi F2221



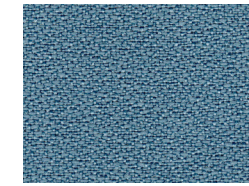
steel grey F2171



cyan blue F2211

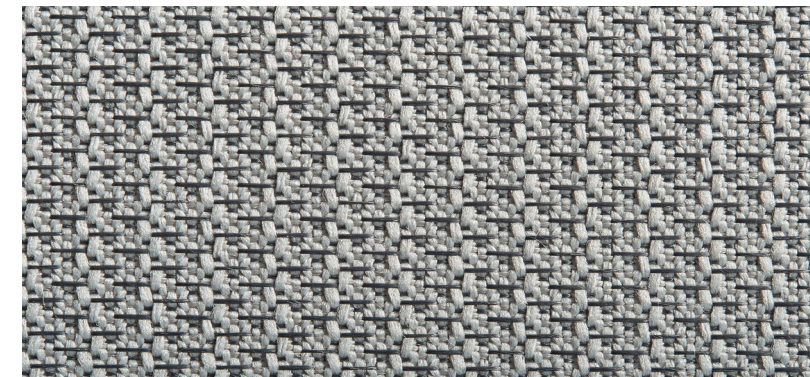


citrus F2231

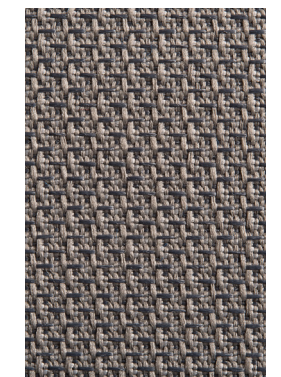


fjord F2181

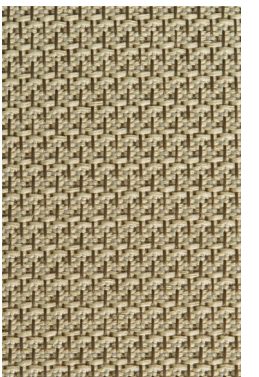
reticolo



grain F4111

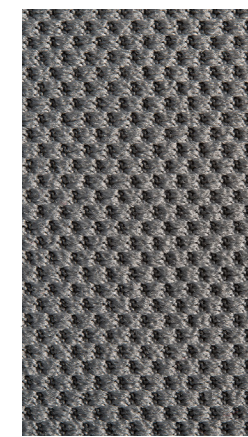


seed F4121



amaranth F4131

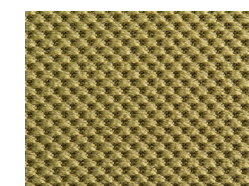
flexi



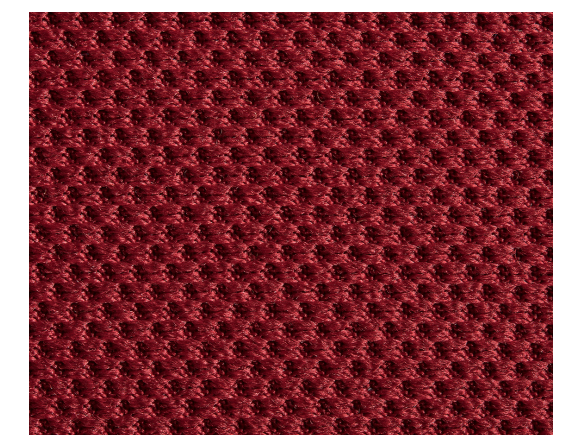
agate F5151



brookite F5111



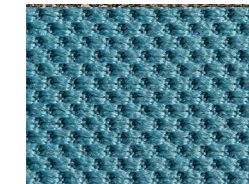
emerald F5131



ruby F5121



moonstone F5161



sapphire F5141

## fabric specifications

pattern	content	width	weight	breaking strength	colorfastness to light	flammability
flexi	100% polyester	67" usable	16.87 ± 1.0 oz./lin. yd.	N/A	AATCC 16E Class 4,5 at 40 hours min	ASTM E-84 Class 1 or A Passes
ballo	100% polyester	67" usable	20 ± 1.0 oz./lin. yd.	230.8 lbs min. warp, 175.1 lbs. min. fill	AATCC 16E Class 4 at 40 hours min	ASTM E-84 Class 1 or A Passes
zapote	100% polyester	67" usable	12.3 ± 1.0 oz./lin. yd.	274.7 lbs. min. warp, 251.7 lbs. min. fill	AATCC 16E Class 4 at 40 hours min	ASTM E-84 Class 1 or A Passes
reticolo	100% polyester	67" usable	12.8 ± 1.0 oz./lin. yd.	246.5 lbs. min. warp, 348.7 lbs. min. fill	AATCC 16E Class 4 at 40 hours min.	ASTM E-84 Class 1 or A Passes
commerce	100% polyester	66" usable	12.0 ± 1.0 oz./lin. yd.	250 lbs. min. warp, 300 lbs. min. fill	AATCC 16E Class 5 at 40 hours min.	ASTM E-84 Class 1 or A Passes
crevasse	100% polyester	66" usable	12.0 ± 1.0 oz./lin. yd.	250 lbs. min. warp, 300 lbs. min. fill	AATCC 16E Class 5 at 40 hours min.	ASTM E-84 Class 1 or A Passes

**Note:** Flexi is not available for Cosmo.

NOTE: Dye lots may vary slightly from samples shown

400 Norris Glen Road  
 Toronto, ON Canada M9C 1H5  
 1-800-675-4092  
 tayco.com

08/21