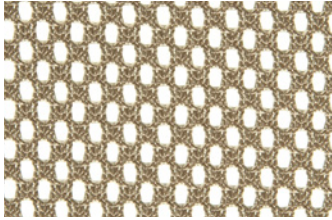
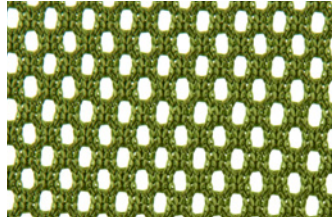


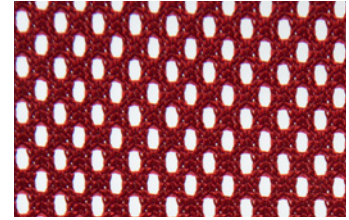
MESH | M7 M8



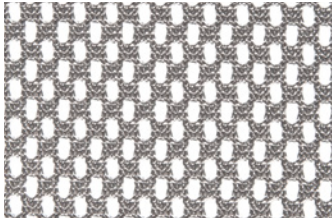
M7 Sandstone



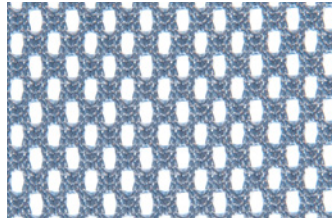
Green Apple



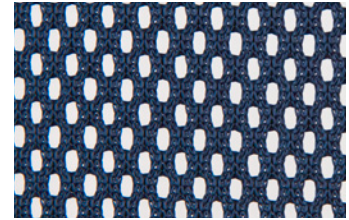
Flare



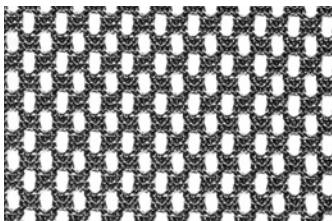
Silver



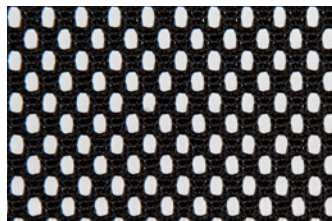
Sky Blue



Navy



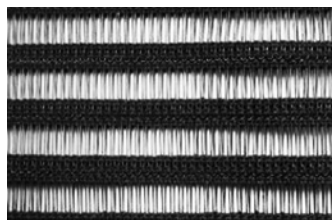
Grey



Black



M8 Sheer Latitude



Horizontal

Technical Information

Width/ Pattern	Applicable Chairs	Fiber Content & Backing	Weight	Protective Finish	Abrasion Resistance	Light- fastness	Approx. Repeats	Cl. Code
M7 60"    	Inertia	100% Polyester	N/A	N/A	100,000 Martindale	N/A	Full Repeat Shown	N/A
M8 Sheer Latitude	Zip	63% Polyester yarns, 37% Spandex	240 g / 1 m	N/A	18,000 cycles	Level 6	Full Repeat Shown	N/A
M8 Horizontal	Zip	68% Polyester yarns, 32% Spandex	240 g / 1 m	N/A	18,000 cycles	Level 6	Full Repeat Shown	N/A

EXPLANATION OF ACT ICONS FOR UPHOLSTERY

Fire Retardancy

Flammability testing determined as fabric's resistance to burning.

Colorfastness to Wet and Dry Crocking

Colorfastness to wet & dry crocking refers to the rubbing off of color from the fabric onto clothing, hands or other materials and can occur under wet or dry conditions.

Colorfastness to Light

Colorfastness to light is the degree to which fabric will retain its color when exposed to light.

Physical Properties

3 physical property tests include: brush pill test to determine a fabric's pilling. Breaking/tensile strength is the ability of a fabric to withstand tension without breaking or tearing. Seam slippage is the pulling apart of fabrics at the seams.

Abrasion

Abrasion is the ability of a fabric to withstand damage from wear and rubbing. There is a general contract specification as well as heavy duty specification.

TORONTO

5800 Avebury Road, Unit 2
Mississauga, ON L5R 3M3

SKU BF9839

CHICAGO*

325 North Wells Street, Suite 210
Chicago, IL 60654

Printed in Canada 04/2017

NEW YORK*

1140 Broadway, Suite 307
New York, NY 10001

*By appointment only

TO VIEW OUR ENTIRE MESH

COLLECTION, VISIT ALLSEATING.COM

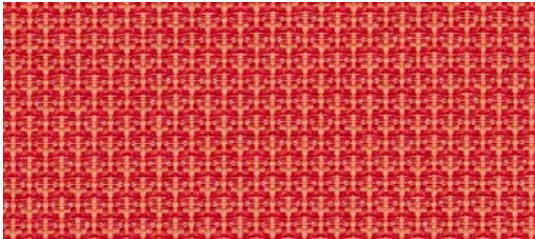
† 1 800 563 3502 ‡ 1 800 272 9911



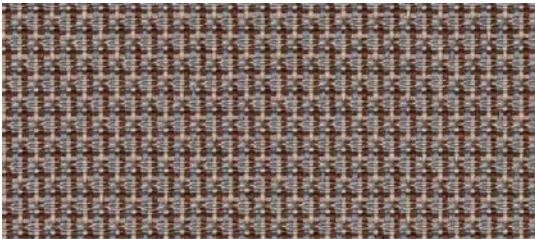
M9 Petal*



Bamboo



Flame*



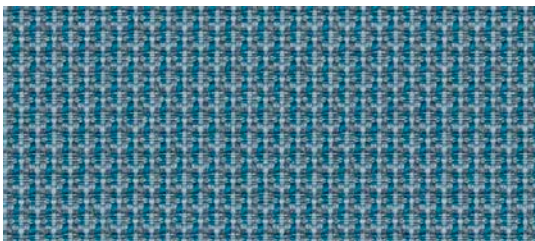
Chestnut



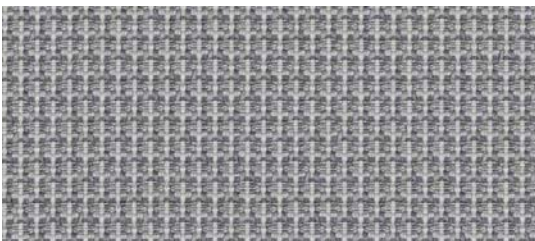
Sunflower*



Frost



Blue Spruce*



Granite








Reef*



Cosmos

* Extended lead times may apply

Technical Information

Width/ Pattern	Applicable Chairs	Fiber Content & Backing	Weight	Protective Finish	Abrasion Resistance	Light- fastness	Approx. Repeats	Cl. Code
M9 55"     	Levo, You	80% Post-Consumer Recycled Polyester 20% Elastomeric Polymer	320 g/lm	N/A	100,000 Double Rubs	Level 6-8	Full Repeat Shown	WS

EXPLANATION OF ACT ICONS FOR UPHOLSTERY

Fire Retardancy

Flammability testing determined as fabric's resistance to burning.

Colorfastness to Wet and Dry Crocking

Colorfastness to wet & dry crocking refers to the rubbing off of color from the fabric onto clothing, hands or other materials and can occur under wet or dry conditions.

Colorfastness to Light

Colorfastness to light is the degree to which fabric will retain its color when exposed to light.

Physical Properties

3 physical property tests include: brush pill test to determine a fabric's pilling. Breaking/tensile strength is the ability of a fabric to withstand tension without breaking or tearing. Seam slippage is the pulling apart of fabrics at the seams.

Abrasion

Abrasion is the ability of a fabric to withstand damage from wear and rubbing. There is a general contract specification as well as heavy duty specification.

Cleaning Instructions

WS Clean with water-based cleaning agents, foam or pure, water-free solvents (Energine, Carbona, Renuzit or other similar products). Vacuuming or light brushing is recommended to prevent dust and soil buildup.

Please visit manufacturer's website for cleaning guide at www.gabriel.dk/en

TORONTO

5800 Avebury Road, Unit 2
Mississauga, ON L5R 3M3

SKU B10012

CHICAGO*

325 North Wells Street, Suite 210
Chicago, IL 60654

Printed in Canada 09/2019

NEW YORK*

1140 Broadway, Suite 307
New York, NY 10001

*By appointment only

TO VIEW OUR ENTIRE MESH

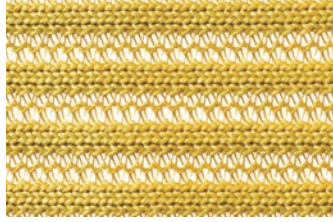
COLLECTION, VISIT ALLSEATING.COM

† 1 800 563 3502 ‡ 1 800 272 9911

MESH | M1



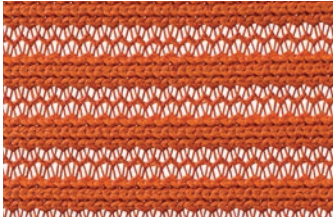
M1 Dune



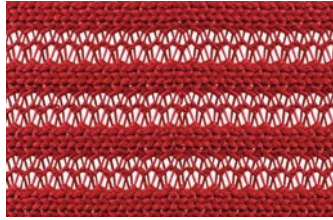
Maize



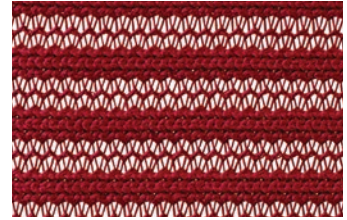
Sage



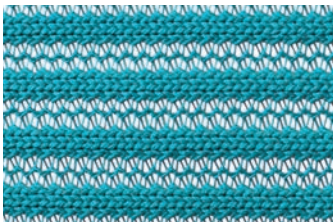
Autumn



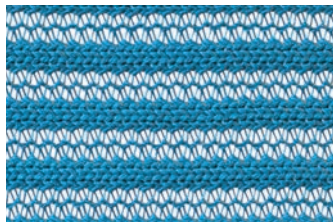
Currant



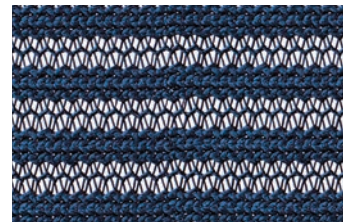
Crimson



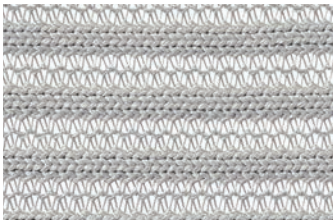
Cove



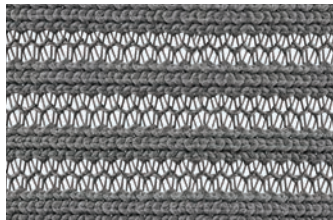
Pacific



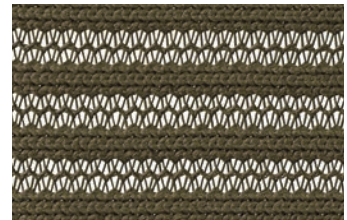
Midnight



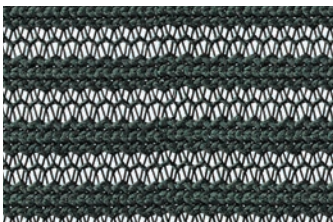
Haze



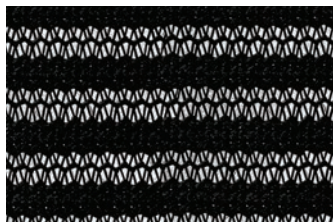
Smoke



Carob







Carbon



Onyx

Technical Information

Width/ Pattern	Applicable Chairs	Fiber Content & Backing	Weight	Protective Finish	Abrasion Resistance	Light- fastness	Approx. Repeats	Cl. Code
M1 56"     	Entail, Inertia, Levo, M.O.	100% Polyester	407 g/m ²	N/A	100,000 Double Rubs	Level 4	Full Repeat Shown	N/A

EXPLANATION OF ACT ICONS FOR UPHOLSTERY

Fire Retardancy

Flammability testing determined as fabric's resistance to burning.

Colorfastness to Light

Colorfastness to light is the degree to which fabric will retain its color when exposed to light.

Abrasion

Abrasion is the ability of a fabric to withstand damage from wear and rubbing. There is a general contract specification as well as heavy duty specification.

Colorfastness to Wet and Dry Crocking

Colorfastness to wet & dry crocking refers to the rubbing off of color from the fabric onto clothing, hands or other materials and can occur under wet or dry conditions.

Physical Properties

3 physical property tests include: brush pill test to determine a fabric's pilling. Breaking/tensile strength is the ability of a fabric to withstand tension without breaking or tearing. Seam slippage is the pulling apart of fabrics at the seams.

TORONTO

5800 Avebury Road, Unit 2
Mississauga, ON L5R 3M3

SKU BF9945

CHICAGO*

325 North Wells Street, Suite 210
Chicago, IL 60654

Printed in Canada 01/2019

NEW YORK*

1140 Broadway, Suite 307
New York, NY 10001

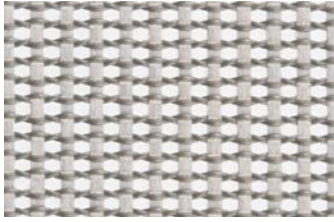
*By appointment only

TO VIEW OUR ENTIRE MESH

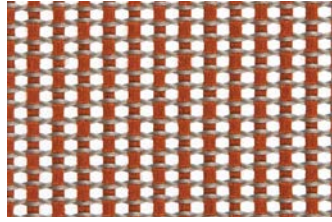
COLLECTION, VISIT ALLSEATING.COM

T 1 800 563 3502 F 1 800 272 9911

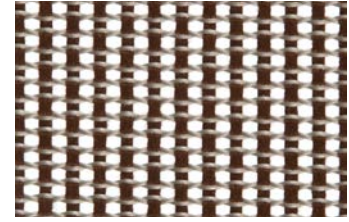
MESH | M2 M3 M4



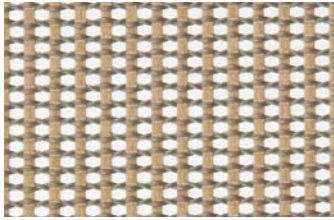
M2 Zinc



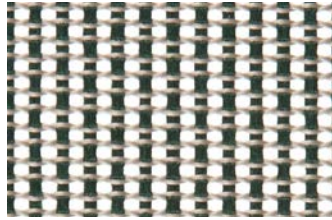
Copper



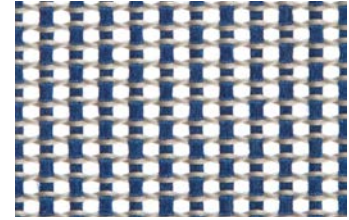
Bronze



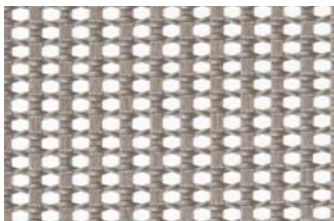
Gold



Patina



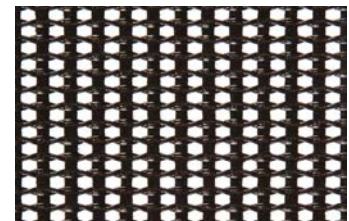
Rhodium



Platinum



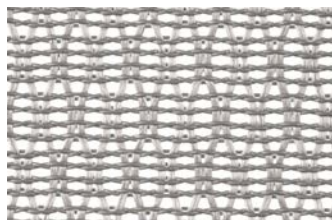
Pewter



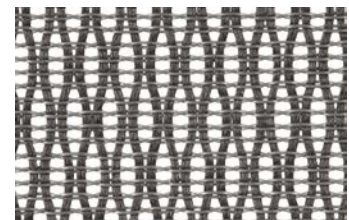
Iron



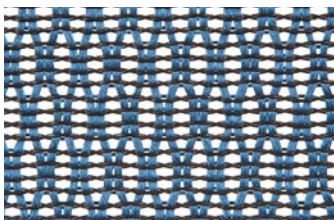
M3 Sandstone



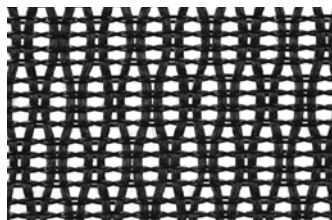
Silica



Dark Grey



Cobalt



Ebony



M4 Black Honeycomb

Technical Information

Width/ Pattern	Applicable Chairs	Fiber Content & Backing	Weight	Protective Finish	Abrasion Resistance	Light- fastness	Approx. Repeats	Cl. Code
M2 70"     	Entail, Fluid, Foster, Inertia, M.O., You, Zip	Polyester co-polymer elastomeric monofilament with polyester/nylon/other fill	0.65 lb/yd ²	N/A	50,000+ cycles	Level 5	Full Repeat Shown	Bleach Cleanable
M3 70"     	Entail, Fluid, Foster, Inertia, M.O., You, Zip	Polyester co-polymer elastomeric monofilament with polyester/nylon/other fill	0.65 lb/yd ²	N/A	50,000+ cycles	Level 5	Full Repeat Shown	Bleach Cleanable
M4 67"     	Entail, Fluid, Inertia, M.O., You, Zip	Polyester co-polymer elastomeric monofilament with polyester/nylon/other fill	0.65 lb/yd ²	N/A	50,000+ cycles	Level 5	Full Repeat Shown	Bleach Cleanable

EXPLANATION OF ACT ICONS FOR UPHOLSTERY

Fire Retardancy

Flammability testing determined as fabric's resistance to burning.

Colorfastness to Wet and Dry Crocking

Colorfastness to wet & dry crocking refers to the rubbing off of color from the fabric onto clothing, hands or other materials and can occur under wet or dry conditions.

Colorfastness to Light

Colorfastness to light is the degree to which fabric will retain its color when exposed to light.

Physical Properties

3 physical property tests include: brush pill test to determine a fabric's pilling. Breaking/tensile strength is the ability of a fabric to withstand tension without breaking or tearing. Seam slippage is the pulling apart of fabrics at the seams.

Abrasion

Abrasion is the ability of a fabric to withstand damage from wear and rubbing. There is a general contract specification as well as heavy duty specification.

Cleaning Instructions

Routine cleaning with soap and water is recommended. Do not use petroleum concentrate. To disinfect, virex wipes or bleach may be used only if diluted with water (10:1 ratio of water and bleach). Rinse immediately with clean water and dry with a clean dry cloth.

For further details on bleach cleaning please visit our website under Warranty: <https://www.allseating.com/resources/warranty>.

TORONTO

5800 Avebury Road, Unit 2
Mississauga, ON L5R 3M3

SKU BF9956

CHICAGO*

325 North Wells Street, Suite 210
Chicago, IL 60654

Printed in Canada 12/2018

NEW YORK*

1140 Broadway, Suite 307
New York, NY 10001

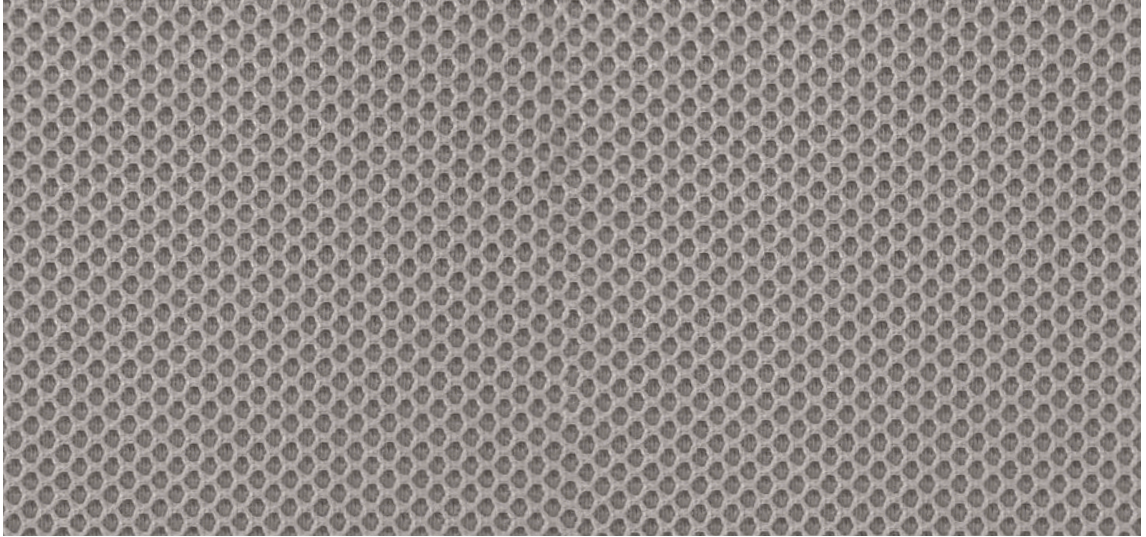
*By appointment only

TO VIEW OUR ENTIRE MESH

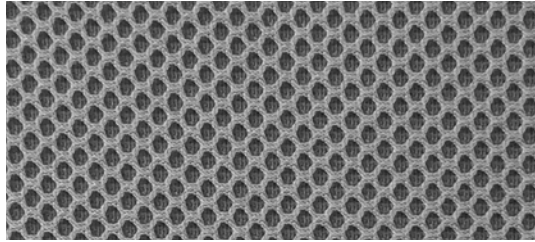
COLLECTION, VISIT ALLSEATING.COM

† 1 800 563 3502 ‡ 1 800 272 9911

MESH | M10



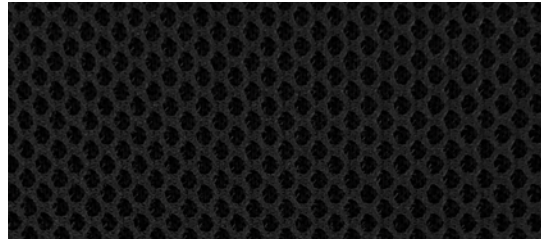
M10 Fog



Nickel



Charcoal



Black

Technical Information

Width/ Pattern	Applicable Chairs	Fiber Content & Backing	Weight	Protective Finish	Abrasion Resistance	Light- fastness	Approx. Repeats	Cl. Code
M10 64"	L1	100% Polyester	310 g/sq. m	N/A	100,000+ Double Rubs	N/A	Full Repeat Shown	WS

Cleaning Instructions

WS Clean with water-based cleaning agents, foam or pure, water-free solvents (Energine, Carbona, Renuzit or other similar products). Vacuuming or light brushing is recommended to prevent dust and soil buildup.

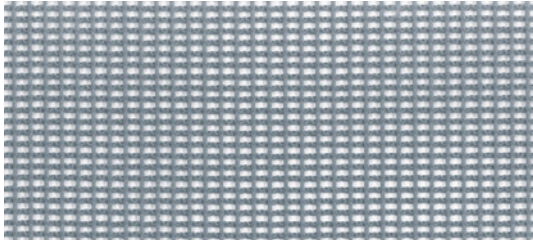
TORONTO
5800 Avebury Road, Unit 2
Mississauga, ON L5R 3M3
SKU B10030

CHICAGO*
325 North Wells Street, Suite 210
Chicago, IL 60654
Printed in Canada 03/2020

NEW YORK*
1140 Broadway, Suite 307
New York, NY 10001
*By appointment only

**TO VIEW OUR ENTIRE MESH
COLLECTION, VISIT ALLSEATING.COM**
T 1 800 563 3502 F 1 800 272 9911

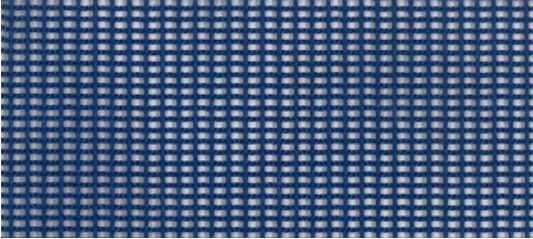
MESH | M11



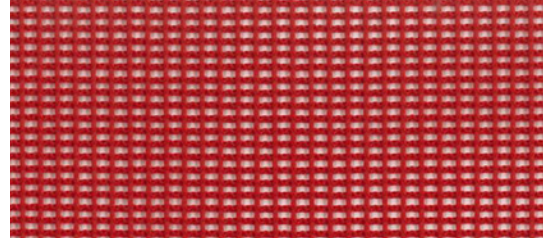
M11 Stardust



Mixtape








New Wave



Arcade

Technical Information

Width/ Pattern	Applicable Chairs	Fiber Content & Backing	Weight	Protective Finish	Abrasion Resistance	Light- fastness	Approx. Repeats	Cl. Code
M11     	Eighty Two	100% Polyester	380 g/yd	N/A	100,000+ Double Rubs	4	Full Repeat Shown	WS

EXPLANATION OF ACT ICONS FOR UPHOLSTERY

Fire Retardancy

Flammability testing determined as fabric's resistance to burning.

Colorfastness to Wet and Dry Crocking

Colorfastness to wet & dry crocking refers to the rubbing off of color from the fabric onto clothing, hands or other materials and can occur under wet or dry conditions.

Colorfastness to Light

Colorfastness to light is the degree to which fabric will retain its color when exposed to light.

Physical Properties

3 physical property tests include: brush pill test to determine a fabric's pilling. Breaking/tensile strength is the ability of a fabric to withstand tension without breaking or tearing. Seam slippage is the pulling apart of fabrics at the seams.

Abrasion

Abrasion is the ability of a fabric to withstand damage from wear and rubbing. There is a general contract specification as well as heavy duty specification.

Cleaning Instructions

WS Clean with water-based cleaning agents, foam or pure, water-free solvents (Energine, Carbona, Renuzit or other similar products). Vacuuming or light brushing is recommended to prevent dust and soil buildup.

TORONTO

5800 Avebury Road, Unit 2
Mississauga, ON L5R 3M3

SKU B10054

CHICAGO*

325 North Wells Street, Suite 210
Chicago, IL 60654

Printed in Canada 11/2021

NEW YORK*

1140 Broadway, Suite 307
New York, NY 10001

*By appointment only

TO VIEW OUR ENTIRE MESH

COLLECTION, VISIT ALLSEATING.COM

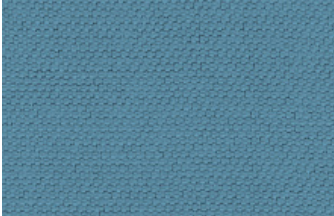
† 1 800 563 3502 ‡ 1 800 272 9911



FLEUR Clay



Lychee



Morning Glory



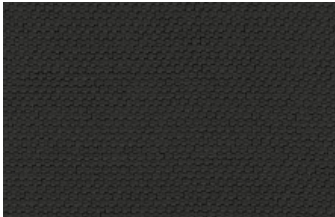
Trail



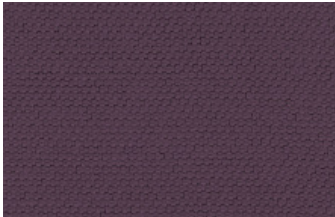
Lavender



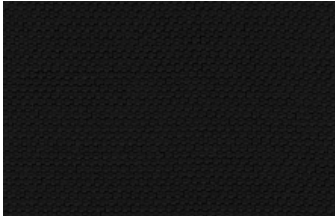
Brunnera



Earth



Fuschia



Black Rose

Technical Information

Width/ Pattern	Fabric Grade	Fiber Content & Backing	Weight	Protective Finish	Abrasion Resistance	Light- fastness	Approx. Repeats	Cl. Code
57" Fleur     	1	100% Polyester	220 g/m ²	N/A	83,000 Double Rubs	Min. 40 Hr. Level 4	Full Repeat Shown	WS

EXPLANATION OF ACT ICONS FOR UPHOLSTERY

Fire Retardancy

Flammability testing determined as fabric's resistance to burning.

Colorfastness to Wet and Dry Crocking

Colorfastness to wet & dry crocking refers to the rubbing off of color from the fabric onto clothing, hands or other materials and can occur under wet or dry conditions.

Colorfastness to Light

Colorfastness to light is the degree to which fabric will retain its color when exposed to light.

Physical Properties

3 physical property tests include: brush pill test to determine a fabric's pilling. Breaking/tensile strength is the ability of a fabric to withstand tension without breaking or tearing. Seam slippage is the pulling apart of fabrics at the seams.

Abrasion

Abrasion is the ability of a fabric to withstand damage from wear and rubbing. There is a general contract specification as well as heavy duty specification.

Cleaning Code Definitions

WS - Water-base cleaning agents or foam.

TORONTO

5800 Avebury Road, Unit 2
Mississauga, ON L5R 3M3

SKU BF9955

CHICAGO*

325 North Wells Street, Suite 210
Chicago, IL 60654

Printed in Canada 01/2021

NEW YORK*

1140 Broadway, Suite 307
New York, NY 10001

*By appointment only

TO VIEW OUR ENTIRE FABRIC

COLLECTION, VISIT ALLSEATING.COM

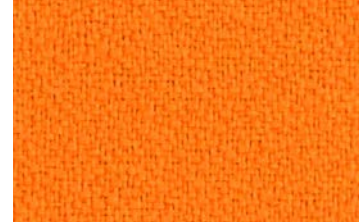
† 1 800 563 3502 F 1 800 272 9911



OASIS Shell



Solar



Sunset



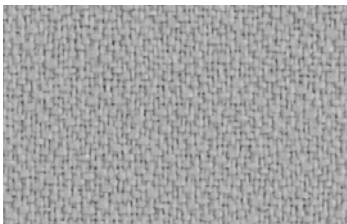
Sand



Kelp



Dusk



Drift



Fern



Red Sea



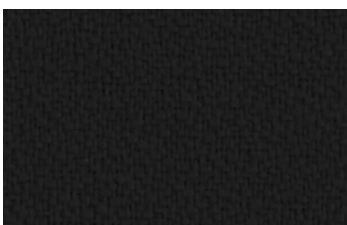
Storm



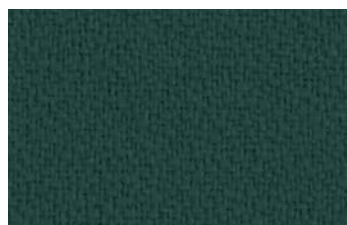
Seafoam



Lagoon



Night







Leaf



Bay

Technical Information

Width/ Pattern	Fabric Grade	Fiber Content & Backing	Weight	Protective Finish	Abrasion Resistance	Light- fastness	Approx. Repeats	Cl. Code
60" Oasis    	1	100% Polyester	350g / y ±5%	N/A	100,000 Double Rubs	4	N/A	WS

EXPLANATION OF ACT ICONS FOR UPHOLSTERY

Fire Retardancy

Flammability testing determined as fabric's resistance to burning.

PASSES California 117

Colorfastness to Wet and Dry Crocking

Colorfastness to wet & dry crocking refers to the rubbing off of color from the fabric onto clothing, hands or other materials and can occur under wet or dry conditions.

PASSES Class 5 Dry, Class 4.5 Wet

Colorfastness to Light

Colorfastness to light is the degree to which fabric will retain its color when exposed to light.

PASSES Class 4 minimum at 40 hours. NOTE: Class 4 minimum at 60 hours is recommended for direct sunlight exposure situations.

Abrasion

Abrasion is the ability of a fabric to withstand damage from wear and rubbing. There is a general contract specification as well as heavy duty specification.

PASSES

 (General Contract) 100,000 double rubs

Cleaning Code Definitions

WS Clean with water-based cleaning agents, foam or pure, water-free solvents (Energin, Carbona, Renuzit or other similar products). Vacuuming or light brushing is recommended to prevent dust and soil buildup.

QUICKSHIP

TORONTO

5800 Avebury Road, Unit 2
Mississauga, ON L5R 3M3

SKU BF9957

CHICAGO*

325 North Wells Street, Suite 210
Chicago, IL 60654

Printed in Canada 01/2019

NEW YORK*

1140 Broadway, Suite 307
New York, NY 10001

*By appointment only

TO VIEW OUR ENTIRE FABRIC

COLLECTION, VISIT ALLSEATING.COM

T 1 800 563 3502 F 1 800 272 9911