

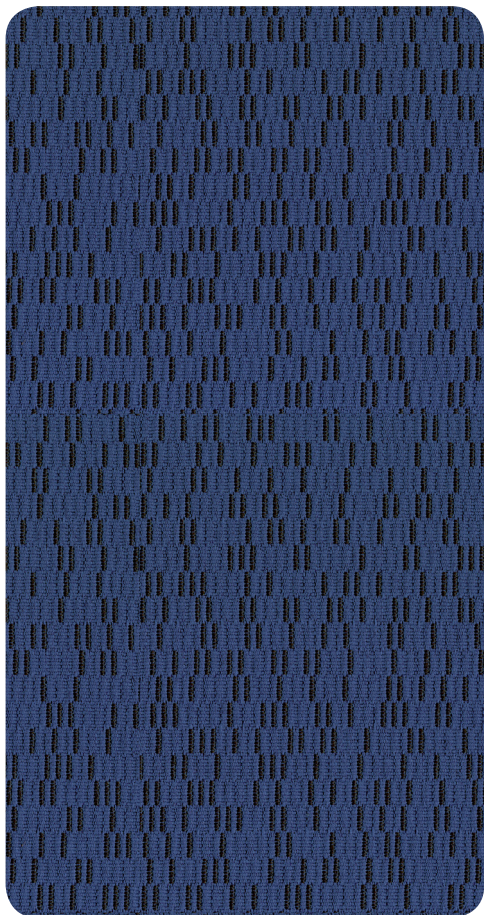
APPROUVÉ PAR

ergoCentric



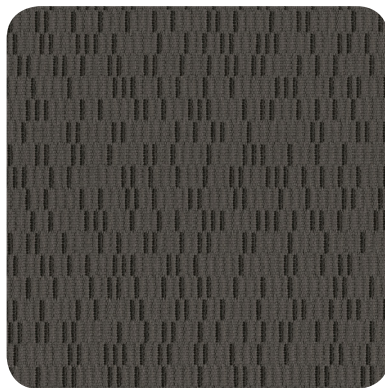
APPROVED | APROBADO

PUNCH CARD



NAVY

1309



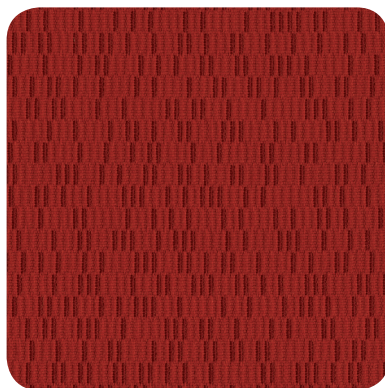
CARBON

1302



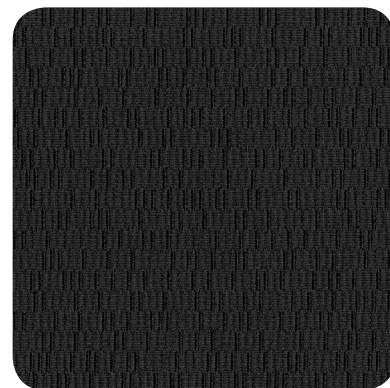
BURGUNDY

1311



CRIMSON

1307



ABYSS

1313




PUNCH CARD

ergoCentric[®]


SPECIFICATIONS

Main use	Seating Vertical surfaces
Repeat	Horizontal: 12.5" Vertical: 25"
Weaving	Jacquard
Content	78% polyester, 22% post consumer recycled polyester
Width	54" usable
Weight	11.1 ± 1 oz./lin. yd.

PERFORMANCES

 Abrasion resistance	100,000 double rubs
 Pilling resistance	Class 4
 Colorfastness to light	40 hours Class 4
Colorfastness to crocking	Dry = Class 4 min. Wet = Class 3 min.
Breaking strength	Warp: 280 lbf. min. Fill: 230 lbf. min.
Seam slippage	Warp: 105 lbf. Fill: 60 lbf.

FLAMMABILITY

NFPA 260-2003	Class 1
 State of CA. Tech. Bulletin 117: 2013 Section 1	Pass
UFAC	Class 1

CLEANING

Standard Care Label W-5: Clean with water based cleaning agents, foam or pure, water free solvents. Vacuuming or light brushing is recommended to prevent dust and soil buildup.




WARRANTY

10 year performance warranty
on all ergoCentric Approved Fabrics.


SPÉCIFICATIONS

Usages	Recouvrement
Répétition	25 po. vertical 12.5 po. horizontal
Tissage	Linguee
Composition	22% polyester recyclé post-consommation 78% polyester
Largeur	54 po min. utilisable
Poids	11.1 ± 1.0 onces/ verge linéaire

PROPRIÉTÉS

 Résistance à l'abrasion	100,000 doubles frottements
 Résistance au peluchage	Classe 4
 Résistance à la lumière	40 heures classe 4
Résistance au dégoûment	Classe 4 min. sec Classe 3 min. humide
Résistance à la rupture	280 lbf. min. chaîne 230 lbf. min. trame
Glissement de la couture	105 lbf. chaîne 60 lbf. trame

INFLAMMABILITÉ

NFPA 260-2003	Classe 1
 État de la Californie Technique 117: 2013 Section 1	Conforme
UFAC	Classe 1

NETTOYAGE

Standard de nettoyage W-5: nettoyer avec des produits nettoyants à base d'eau, en mousse ou en liquide ou solvant sans eau. Il est recommandé d'utiliser l'aspirateur ou la brosse pour prévenir l'accumulation de poussière ou de salissures.




GARANTIE

Garantie de performance de 10 ans sur
tous les tissus approuvés par ergoCentric.


ESPECIFICACIONES

Uso principal	Sillas Superficies verticales
Repetición	Horizontal: 12.5" Vertical: 25"
Tejido	Jacquard
Contenido	22% poliéster reciclado después del consumo, 78% poliéster reciclado antes del consumo
Ancho	54" utilizable
Peso	11.1 ± 1 oz./yd.

PROPIEDADES

 Resistencia a la abrasión	100.000 frotados dobles
 Resistencia a la perforación	Clase 4
 Resistencia del color a la luz	40 horas clase 4
Resistencia del color a la cocción	Clase 4 min.- seco Clase 3 min.- húmedo
Resistencia a la rotura	Urdimbre: 280 lbf. min. Trama: 230 lbf. min.
Deslizamiento de la costura	Urdimbre: 105 lbf. Trama: 60 lbf.

INFLAMABILIDAD

NFPA 260-2003	Clase 1
 Estado de California. Boletín técnico 117: 2013 Sección 1	Pasa
UFAC	Clase 1

LIMPIEZA

Etiqueta de cuidado estándar W-5.
Limpiar con productos de limpieza a base
de agua, espuma o disolventes puros sin agua.
Se recomienda aspirar o cepillar ligeramente
para evitar la acumulación de polvo y tierra.

GARANTÍA

10 años de garantía de rendimiento en todas
las tapicerías aprobadas por ergoCentric.