



MTC 1: Product Information Worksheet

Category: 6 – Collaborative Products

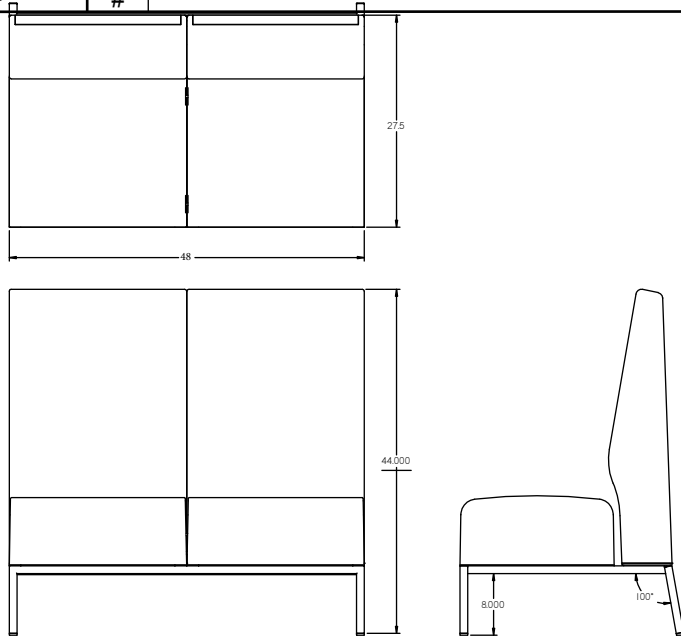
Subcategory: 6C-1, Typical 6C1-1

- a) **Series:** Tailor
- b) **Component Part Number / Ordering Code:** 9102HB
- c) **Component Finishes:** Various. See attached.
- d) **Component Height:** Seat Height: 18", Total Height: 44"
- e) **Component Width:** Seat Width: 24", Total Width: 48"
- f) **Component Length:** 27.5"

| | | | | | | |
|-----------------------------|--------------------------------|---|--------------------|--|------------------|------------------|
| PRODUCT LINE | QUOTE / SALES ORDER Q151237 | | | | Name D Hughes | Date 02/17/23 |
| DRAWING NO. | | A | RELEASED FOR QUOTE | | | |
| | | B | | | | |
| DATE 02/17/23 | DRAWN BY | C | | | | |
| | PAGE | D | | | | |
| FOR QUOTING PURPOSES | | | E | | | |
| | | # | | | | |



Part Number: 9102HB

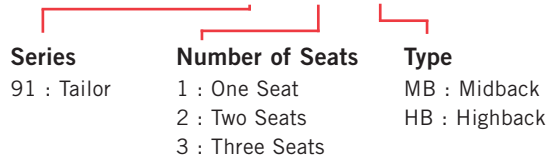


TAILOR Lounge Collection - BOOTH



PRODUCT CODE

91 03 HB



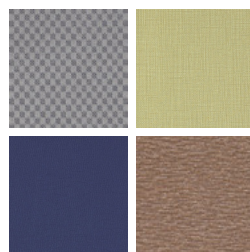
FINISHES

FRAME



Select from one of our 76 standard Spectone colors

FABRIC



Select fabrics from one of our textile partners

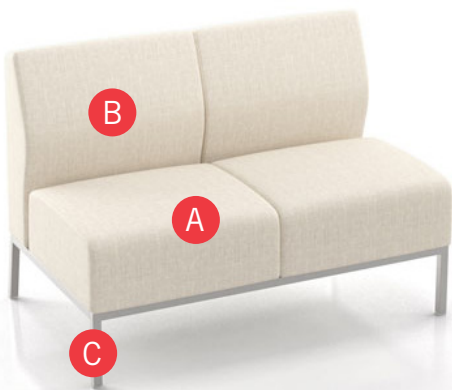
POWER



In seat

See Spectone Card or specfurniture.com/tools-and-resources/product-resources/finishes for a complete list of finish options and colors.

HOW TO ORDER



Specify Model

- A** Specify Fabric - Seat¹
Manufacturer, Pattern Name, Color
- B** Specify Fabric - Back¹
Manufacturer, Pattern Name, Color
- C** Specify Frame Finish

Optional: CAL 133, Moisture Barrier, Freestanding Tables, Leveling Glides, Power

¹ When multiple fabrics are specified, please provide a drawing and legend for fabric placement.

| Model | Fabric - Seat | Fabric - Back 1 | Fabric - Back 2 | Frame Finish |
|--------|---------------------------|---------------------------|---------------------------|--------------|
| 9102MB | Momentum, Beeline, Canvas | Momentum, Beeline, Canvas | Momentum, Beeline, Canvas | Silver |

TAILOR Lounge Collection - BOOTH

HIGHBACK

Standard Features

- Separate seat and back
- Meets seating durability test to 500 lbs per single seat highback booth, and to 570 lbs per two seat highback booth
- Single piece seat upholstery for easier maintenance
- Non wall-saving frame
- Clear, non-marring glides
- Ships assembled
- Ships 1 single seat sofa per carton, 25 cu ft
- Ships 1 two seat sofa per carton, 55 cu ft

For fabrics you wish railroaded or repeats larger than 5" x 5", please contact the factory with repeat information, and yardage requirement will be provided.



Non Wall-saving Frame

To ensure proper configuration please provide a layout drawing.

Options

- For an individually sewn seat upholstery that creates a gap between seats, call Customer Service
- Leveling glides with inserts (set of 4) are available, add \$24 List
- Upholstered seat/back can match or contrast
- Cove Mini power module centered in the seat front is available in Black, Silver and White. Add \$578 List per seat per module
- Antibacterial and antimicrobial fabrics available
- CAL 133 for 9101HB, add \$342 List per unit. CAL 133 for 9102HB, add \$684 List per unit



Cove Mini

Single Seat, Highback Booth

COM 3.75 yds

1.5 yds COM per single seater seat

2.25 yds COM per single seater back

| MODEL | COM | GR 1 | GR 2 | GR 3 | GR 4 | GR 5 | GR 6 |
|---------------|-------------|-------------|-------------|-------------|-------------|-------------|-------------|
| 9101HB | 1228 | 1465 | 1545 | 1713 | 1948 | 2140 | 2377 |

Dimensions (inches)

| | | | | | | | |
|---------|------|---------|------|-------|-------|--|--|
| seat H | 18.0 | seat W | 24.0 | | | | |
| total H | 44.0 | total W | 24.0 | depth | 27.50 | | |



9101HB
54 lbs

Two Seat, Highback Booth

COM 7.0 yds

2.5 yds COM per two seater one-piece seat

4.5 yds COM per two seater two-piece back (2.25 yds COM per single back)

| MODEL | COM | GR 1 | GR 2 | GR 3 | GR 4 | GR 5 | GR 6 |
|---------------|-------------|-------------|-------------|-------------|-------------|-------------|-------------|
| 9102HB | 2247 | 2683 | 2831 | 3136 | 3571 | 3914 | 4350 |

Dimensions (inches)

| | | | | | | | |
|---------|------|---------|------|-------|-------|--|--|
| seat H | 18.0 | seat W | 24.0 | | | | |
| total H | 44.0 | total W | 48.0 | depth | 27.50 | | |



9102HB
98 lbs

TAILOR Lounge Collection - BOOTH

HIGHBACK

Standard Features

- Separate seat and back
- Meets seating durability test to 750 lbs per three seat highback booth
- Single piece seat upholstery for easier maintenance
- Non wall-saving frame
- Clear, non-marring glides
- Ships assembled
- Ships 1 three seat sofa per carton, 79 cu ft

For fabrics you wish railroaded or repeats larger than 5" x 5", please contact the factory with repeat information, and yardage requirement will be provided.



Non Wall-saving Frame

To ensure proper configuration please provide a layout drawing.

Options

- For an individually sewn seat upholstery that creates a gap between seats, call Customer Service
- Leveling glides with inserts (set of 4) are available, add \$24 List
- Upholstered seat/back can match or contrast
- Cove Mini power module centered in the seat front is available in Black, Silver and White. Add \$578 List per seat per module
- Antibacterial and antimicrobial fabrics available
- CAL 133 for 9103HB, add \$1043 List per unit



Cove Mini

Three Seat, Highback Booth

COM 10.5 yds
 3.75 yds COM per three seater one-piece seat
 6.75 yds COM per three seater three-piece back (2.25 yds COM per single back)

| MODEL | COM | GR 1 | GR 2 | GR 3 | GR 4 | GR 5 | GR 6 |
|---------------|-------------|-------------|-------------|-------------|-------------|-------------|-------------|
| 9103HB | 3266 | 3901 | 4117 | 4559 | 5194 | 5688 | 6323 |

Dimensions (inches)

| | | | | | |
|---------|------|---------|------|-------|-------|
| seat H | 18.0 | seat W | 24.0 | | |
| total H | 44.0 | total W | 72.0 | depth | 27.50 |



9103HB
161 lbs