



## MTC 1: Product Information Worksheet

**Category:** 6 – Collaborative Products

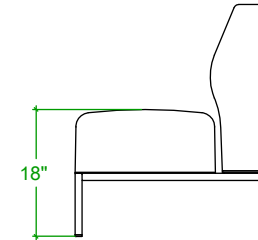
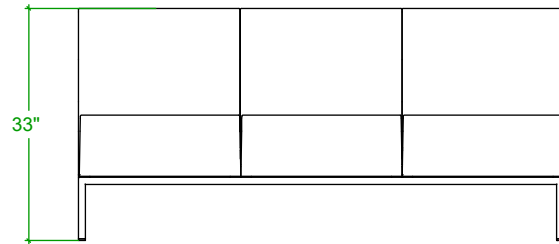
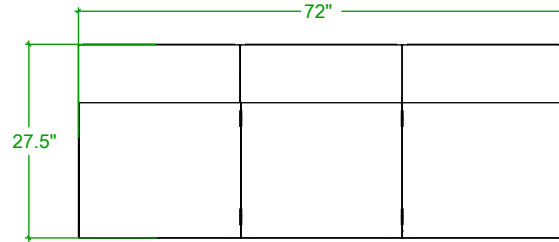
**Subcategory:** 6C-1, Typical 6C1-2

- a) **Series:** Tailor
- b) **Component Part Number / Ordering Code:** 9103MB
- c) **Component Finishes:** Various. See attached.
- d) **Component Height:** Seat Height: 18", Total Height: 33"
- e) **Component Width:** Seat Width: 24", Total Width: 72"
- f) **Component Length:** 27.5"

PRODUCT LINE	QUOTE / SALES ORDER Q151237			Name D Hughes	Date 03/15/23
DRAWING NO.		A	RELEASED FOR QUOTE		
		B			
DATE 03/15/23	DRAWN BY Dave Hughes	C			
	PAGE	D			
<b>FOR QUOTING PURPOSES</b>			E		
		F			



Part Number: 9103MB



# TAILOR Lounge Collection - FREESTANDING



## PRODUCT CODE

**91 02 M**

**Series**  
 91 : Tailor

**Number of Seats**  
 01 : Single Seat  
 02 : Two Seat  
 03 : Three Seat

**Chair Type**  
 M : Mid Back

## OPTIONS

### ARM GAP



### ARM CAP



### POWER



In table



In seat

## FINISHES

### FRAME



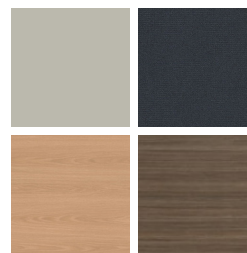
Select from one of our 76 standard Spectone colors

### FABRIC



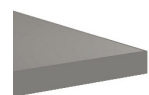
Select fabrics from one of our textile partners

### LAMINATE



Select from 15 standard laminates or choose any standard Wilsonart, Nevamar, Formica, Arborite and Pionite matte finish laminates for no extra charge

### EDGE



SE

### ARM CAPS



Polyurethane

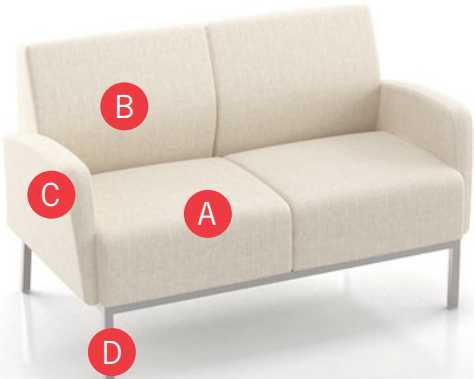
Wood

See Spectone Card or [specfurniture.com/tools-and-resources/product-resources/finishes](http://specfurniture.com/tools-and-resources/product-resources/finishes) for a complete list of finish options and colors.



# TAILOR Lounge Collection - FREESTANDING

## HOW TO ORDER



### Specify Model

- A** Specify Fabric - Seat<sup>1</sup>  
*Manufacturer, Pattern Name, Color*
- B** Specify Fabric - Back<sup>1</sup>  
*Manufacturer, Pattern Name, Color*
- C** Specify Fabric - Arms<sup>1</sup>  
*Manufacturer, Pattern Name, Color*
- D** Specify Frame Finish

Optional: CAL 133, Moisture Barrier, 1" Gap Between Seat and Arm, Arm Caps, Freestanding Tables, Power

Restrictions may apply. See price list tables below for more information.

<sup>1</sup> When multiple fabrics are specified on two and three seat chairs, please provide a drawing and legend for fabric placement.



Model	Fabric - Seat 1	Fabric - Seat 2	Fabric - Back 1	Fabric - Back 2	Fabric - Arm 1	Fabric - Arm 2	Frame Finish
9102M	Momentum, Beeline, Canvas	Momentum, Beeline, Canvas	Momentum, Beeline, Canvas	Momentum, Beeline, Canvas	Momentum, Beeline, Canvas	Momentum, Beeline, Canvas	Silver

# TAILOR Lounge Collection - FREESTANDING

## Standard Features

- Separate seat and back
- Meets seating durability test to 750 lbs per chair
- Wall-saving frame
- Clear, non-marring glides
- Ships assembled, 1/carton 62 cu ft

*For fabrics you wish railroaded or repeats larger than 5" x 5", please contact the factory with repeat information, and yardage requirement will be provided.*



Wall-saving Frame

## Options

- Polyurethane arm caps available in Black (B), Taupe RAL 7006 (T) or Sterling Grey (G), add **\$140** List per arm
- For wood arm caps, select from 9 standard stains, or stain-to-match for no extra charge, add **\$165** List per arm
- 1" gap between seat and arm available at **\$46** List per arm
- Upholstered arms/seat/back can match or contrast
- Cove Mini power module centered in the seat front is available in Black, Silver and White. Add **\$578** List per seat per module
- Antibacterial and antimicrobial fabrics available
- Tablet Arm available, add **\$650** List per unit
- CAL 133 for 9103M-NA, add **\$789** List per unit. CAL 133 for 9103M, add **\$936** List per unit



Tapered End Arm



Cove Mini



Tablet Arm

## Three Seat Without Arms

COM 8.25 yds  
 1.25 yds COM per single seat  
 1.5 yds COM per single back

MODEL	COM	GR 1	GR 2	GR 3	GR 4	GR 5	GR 6
<b>9103M-NA</b>	<b>2775</b>	<b>3291</b>	<b>3460</b>	<b>3820</b>	<b>4339</b>	<b>4730</b>	<b>5247</b>

Dimensions (inches)

seat H	18.0	seat W	24.0				
total H	33.0	total W	72.0	depth	29.0		



**9103M-NA**  
149 lbs

## Three Seat With Arms

COM 9.75 yds  
 1.25 yds COM per single seat  
 1.5 yds COM per single back  
 0.75 yds COM per arm

MODEL	COM	GR 1	GR 2	GR 3	GR 4	GR 5	GR 6
<b>9103M</b>	<b>3182</b>	<b>3797</b>	<b>3999</b>	<b>4427</b>	<b>5039</b>	<b>5502</b>	<b>6119</b>

Dimensions (inches)

seat H	18.0	seat W	24.0	arm H	24.5		
total H	33.0	total W	7.5	depth	29.0		



**9103M**  
173 lbs