



## **MTC 1: Product Information Worksheet**

**Category:** 6 – Collaborative Products

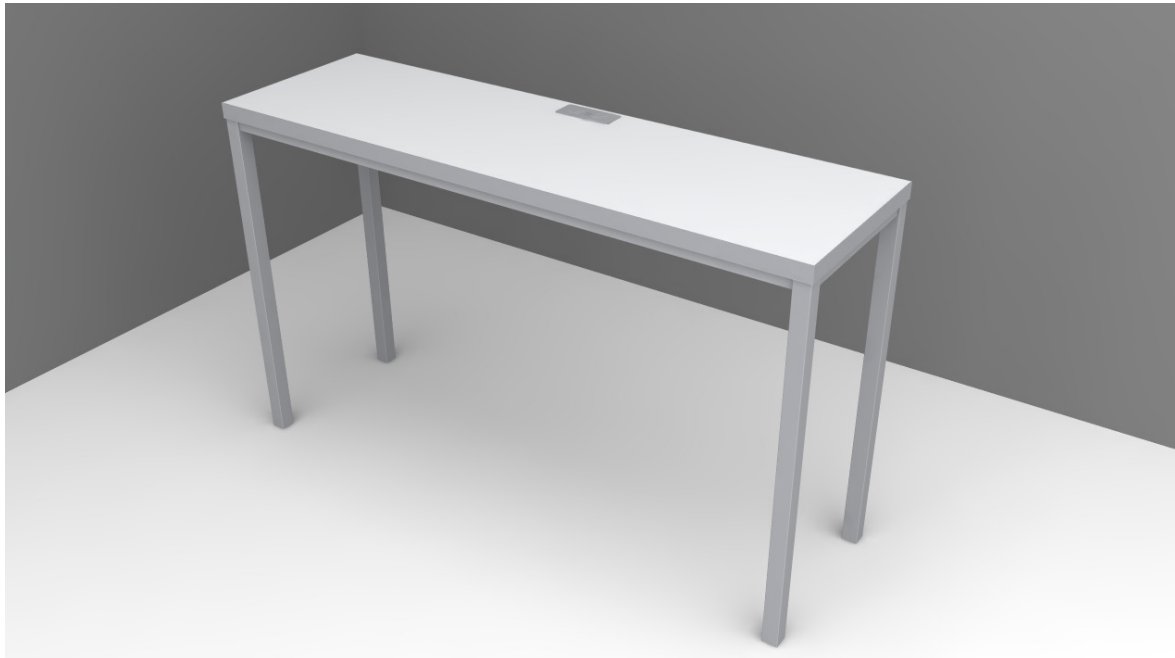
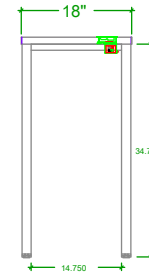
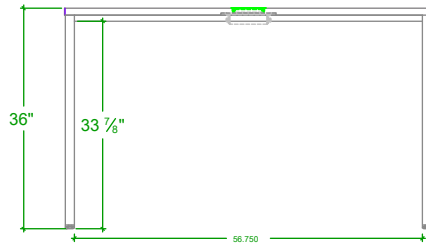
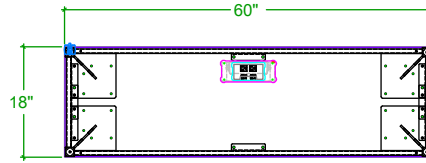
**Subcategory:** 6D-1, Typical 6D1-1

- a) **Series:** Varsity
- b) **Component Part Number / Ordering Code:** VST1
- c) **Component Finishes:** Various. See attached.
- d) **Component Height:** 36"
- e) **Component Width:** 60"
- f) **Component Length:** 18"

PRODUCT LINE		QUOTE / SALES ORDER Q151237		Name		Date	
DRAWING NO.		RELEASED FOR QUOTE		D Hughes		02/17/23	
DATE		DRAWN BY		PAGE			
02/17/23		D Hughes					
FOR QUOTING PURPOSES				A			
				B			
				C			
				D			
				E			
				#			



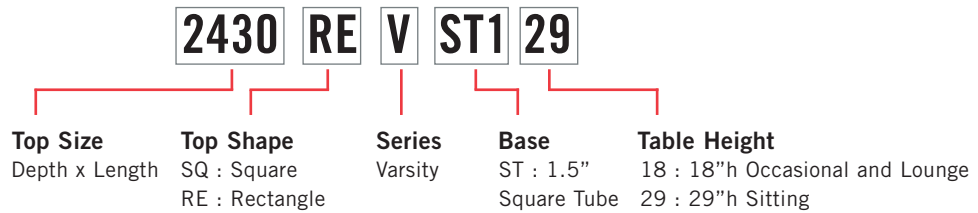
Part Number: VST1



# VARSITY TABLES



## PRODUCT CODE



## OPTIONS

### SEAM CONNECTORS



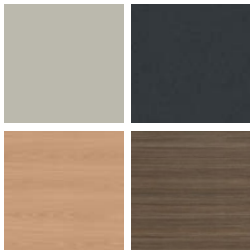
### CASTERS



1.5" Low Profile Locking Caster

## FINISHES

### LAMINATE



Select from 15 standard laminates or choose any standard Wilsonart, Nevamar, Formica, Arborite and Pionite matte finish laminates for no extra charge

### VENEER



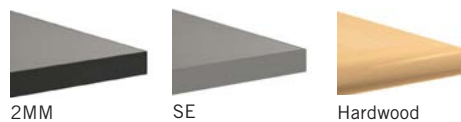
Select from one of our 9 standard wood stains or stain-to-match for no extra charge

### BASE



Select from one of our 76 standard Spectone colors

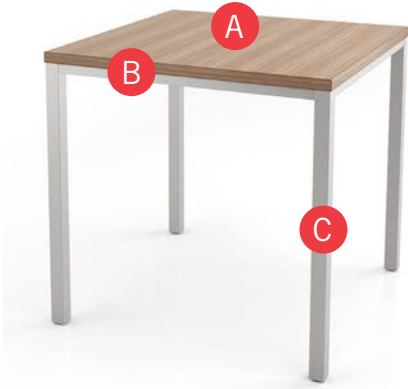
### EDGE



See Spectone Card or [specfurniture.com/tools-and-resources/product-resources/finishes](http://specfurniture.com/tools-and-resources/product-resources/finishes) for a complete list of finish options and colors.

# VARSITY TABLES

## HOW TO ORDER



### Specify Top Size (Width x Length) and Shape

- A** Specify Top Type and Finish  
*For Laminate Top: Manufacturer, Laminate Name, Laminate Code*  
*For Veneer Top: Wood Species & Stain*
- B** Specify Edge Type and Finish  
*2mm Bio/2mm PVC Woodgrain/Self Edge/Hardwood*
- C** Specify Base Style and Finish

Optional: Seam Connectors, Casters, Power and Data Modules

Top Size and Shape	Top Type and Finish	Edge Type and Finish	Base Style and Finish
36 x 36, Square	Laminate, Arborite, Brown Sugar	Hardwood, HF, Custom Brown Sugar Stain	VST129, Silver

## EDGE PROFILES

