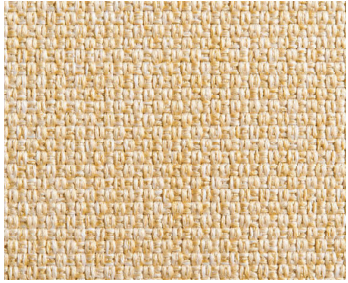


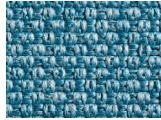
panel fabric | grade 1



ballo



sand F5181



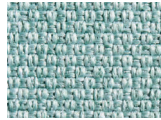
oceanic F6131



aurora F6121



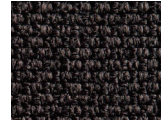
dusk F6171



seaside F5191



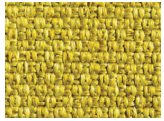
stone F6151



nightfall F6161



pebble F5171



sunset F6141



moss F6111



stone F6151

zapote



garter F4141



lace F4181



stockinette F4151



intarsia F4171



cable F4161



slip F47D1



cross F48D1



basting F49D1

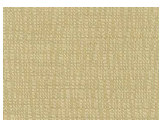
crevasse



crown blue F3191



chamonix F3181



pebble F53D1



modern grey F55D1



sunrise F56D1



neutral grey F3201



olive F54D1



modern grey F55D1



forest F57D1

commerce



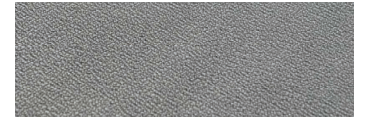
slate F2141



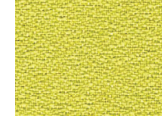
sand F2151



grey F2161



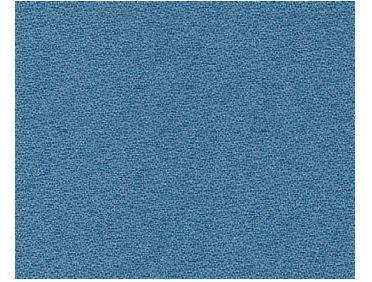
steam F2201



kiwi F2221



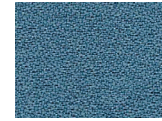
steel grey F2171



cyan blue F2211

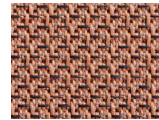


citrus F2231

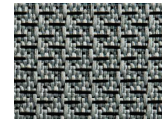


fjord F2181

reticolo



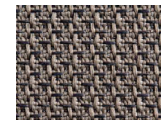
sesame F45D1



rye F43D1



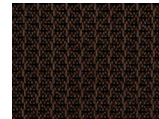
chia F46D1



seed F4121



amaranth F4131



barley F41D1



oat F42D1

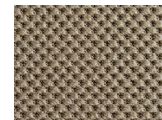


grain F4111

flexi



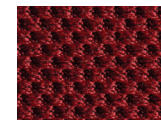
agate F5151



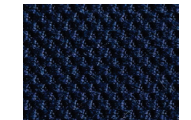
brookite F5111



emerald F5131



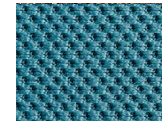
ruby F5121



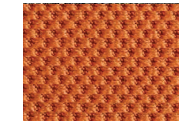
tanzanite F51D1



moonstone F5161



sapphire F5141



amber F52D1

## fabric specifications

pattern	content	width	weight	breaking strength	colorfastness to light	flammability
<b>flexi</b>	100% polyester	67" usable	16.87 ± 1.0 oz./lin. yd.	N/A	AATCC 16E Class 4.5 at 40 hours min	ASTM E-84 Class 1 or A Passes
<b>ballo</b>	100% polyester	67" usable	20 ± 1.0 oz./lin. yd.	230.8 lbs. min. warp, 175.1 lbs. min. fill	AATCC 16E Class 4 at 40 hours min	ASTM E-84 Class 1 or A Passes
<b>zapote</b>	100% polyester	67" usable	12.3 ± 1.0 oz./lin. yd.	274.7 lbs. min. warp, 251.7 lbs. min. fill	AATCC 16E Class 4 at 40 hours min	ASTM E-84 Class 1 or A Passes
<b>reticolo</b>	100% polyester	67" usable	12.8 ± 1.0 oz./lin. yd.	246.5 lbs. min. warp, 348.7 lbs. min. fill	AATCC 16E Class 4 at 40 hours min.	ASTM E-84 Class 1 or A Passes
<b>commerce</b>	100% polyester	66" usable	12.0 ± 1.0 oz./lin. yd.	250 lbs. min. warp, 300 lbs. min. fill	AATCC 16E Class 5 at 40 hours min.	ASTM E-84 Class 1 or A Passes
<b>crevasse</b>	100% polyester	66" usable	12.0 ± 1.0 oz./lin. yd.	250 lbs. min. warp, 300 lbs. min. fill	AATCC 16E Class 5 at 40 hours min.	ASTM E-84 Class 1 or A Passes

Note: Flexi is not available for Cosmo.

NOTE: Dye lots may vary slightly from samples shown

24 Armstrong Avenue  
Georgetown, ON Canada L7G 4R9  
1-877-260-4309  
brc.group

02/23