

# CAT 3

## FILING CABINETS AND STORAGE

**COLLECTIONS**

TAKE OFF

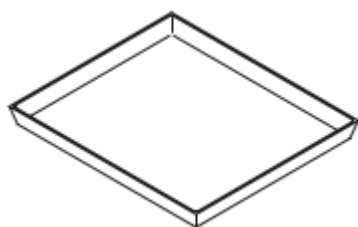
**GENERAL INFORMATION**

**Description**

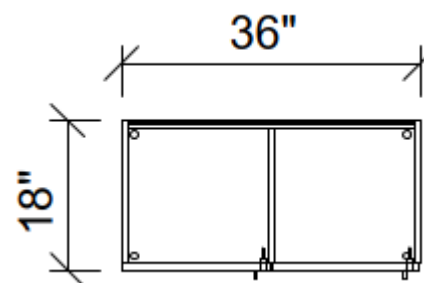
- Lockers with 4 doors
- 12 x 10 Boot Bins
- **Tablet**
- 18 x 36 x 48
- Key lock and handle

**Finish**

- Low pressure laminate
- 1.5mm thick ABS edge banding
- HIPS (high impact polystyrene) boot tray



PLAN VIEW



**COLLECTIONS**

TAKE OFF

**GENERAL INFORMATION**

**Description**

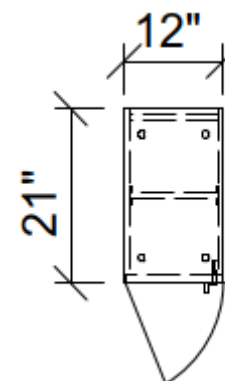
- Locker with 1 door
- Clothes rail
- Hat Shelf
- 21 x 12 x 53 3/8
- Key lock included

**Finish**

- Low pressure laminate
- 1.5 mm thick ABS edge banding



PLAN VIEW



Laminates  
Laminés

01

Specifications  
Spécifications

This is  
where ideas  
take flight.  
C'est ici  
que des idées  
décolleront.

01

Colors Couleurs	Finishes Finis	Codes
Black / Noir *	Dolomite	N
Carbon / Carbone	Aura	CB
Cayenne Maple / Érable de cayenne	Suede	CM
Charcoal / Fusain	Dolomite	F
Cherry / Cerisier	Suede	CH
Chestnut / Châtaigne	Supermat	CG
Dalia	Aura	DA
First Class / Première classe	Karisma	ST
Free Spirit / Esprit libre	Karisma	EL
Frost / Grès	Dolomite	A
Galaxy / Galaxie	Aura	GX
Ginger Root / Gingembre	Aura	GG
Honey / Miel	Suede	HO
Lago	Supermat	LA
Maritime Maple / Érable maritime	Supermat	EM
Moka	Supermat	PM
Sea Salt / Sel de mer	Aura	SM
Sesame / Sésame	Aura	SE
Sheer Beauty / Beauté naturelle	Karisma	BN
Tobacco Cherry / Cerisier tabac	Supermat	TC
White / Blanc	Dolomite	BW
Willow Grey / Gris saule **	Supermat	WG

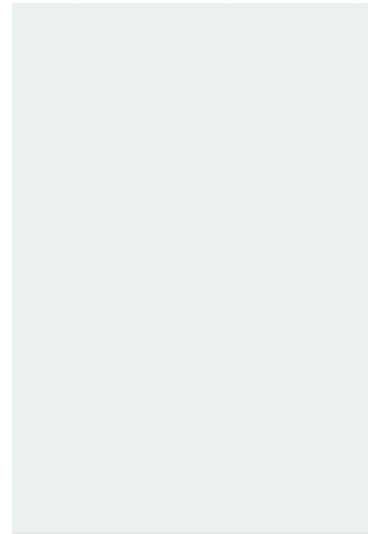
\* Black is not available as a TOP color. / Le noir n'est pas disponible en tant que couleur de SURFACE.

\*\* Willow Grey in H.P.L. has a MAT finish, not supermat. / La couleur Gris saule en stratifié a un fini MAT, et non supermat.

artopex®

artopex®

Head office/Siège social  
800 Vadnais, Granby QC  
J2J 1A7 CANADA  
T 450 378 0189/1 800 363 3040  
F 450 378 9712  
artopex.com



White / Blanc  
**BW**



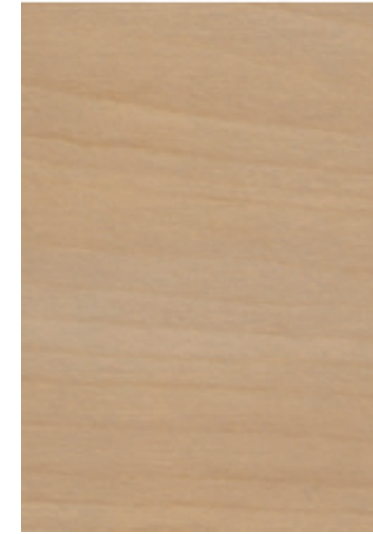
Frost / Grès  
**A**



Willow Grey / Gris saule  
**WG**



Lago  
**LA**



Maritime Maple / Érable maritime  
**EM**



Honey / Miel  
**HO**



Tobacco Cherry / Cerisier tabac  
**TC**



Cherry / Cerisier  
**CH**



Sea Salt / Sel de mer  
**SM**



Free Spirit / Esprit libre  
**EL**



Sheer Beauty / Beauté naturelle  
**BN**



Ginger Root / Gingembre  
**GG**



First Class / Première classe  
**ST**



Cayenne Maple / Érable de cayenne  
**CM**



Galaxy / Galaxie  
**GX**



Sesame / Sésame  
**SE**



Moka  
**PM**



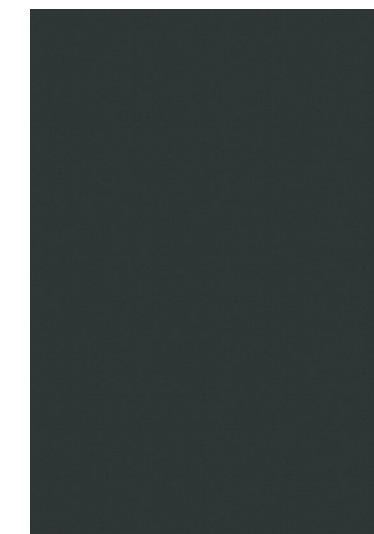
Dalia  
**DA**



Chestnut / Châtaigne  
**CG**



Carbon / Carbone  
**CB**



Charcoal / Fusain  
**F**



Black / Noir  
**N**